

# The Prescott Series

BLSP - Linear Strip

Project

Date

Part

Type



## About The Prescott Series

The BLSP is a series of LED linear strip fixtures designed for surface and suspended mounting. It is well suited for indoor use where high efficiency row-mountable task lighting is required. Its narrow strip design and modern profile make it an ideal fixture for task lighting applications.

## Specifications

Supported Voltage  
Available Sizes  
Lifetime  
Lumens  
Operating Temperature  
CCT  
CRI  
Dimming  
Mounting

120-277V, 347V, 120-347V  
1', 2', 3', 4', 6', 8'  
L70 of 99,000+ hours, L90 of 30,000+ hours  
1' 1.125L (1126lm) to 8' 23L (23191lm)  
-20°C/+25°C (-40°/+40°C upgrade)  
2700K, 3000K, 3500K, 4000K, 5000K, 6500K  
80+ standard, 90+ and 95+ available  
0-10V Standard  
Holes provided for V-hangers, S-hook chain-mounting, or aircraft cables. Optional pendant mount and row-mount brackets.  
Knockouts provided for row mounting

## Approvals

- ETL Listed
- DLC Listed
- Dry and Damp Environment Rated
- Designed and Manufactured in Canada

## Warranty

5 Year Comprehensive, 10 Year LED

# The Prescott Series

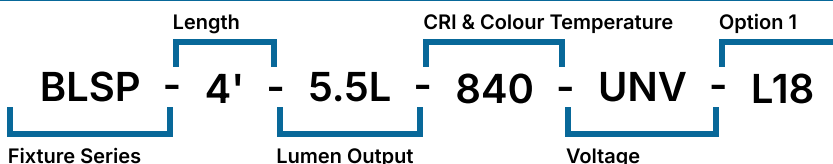
BLSP - Linear Strip

Linear Strip Lighting by



## Ordering Information

Fill in the fields below with your product selections. If you need help with this section, [contact your local sales professional](#).



1	2	3	4	5
BLSP				
Series	Length & Lumen Output		CRI	Voltage
BLSP	1' - 1.125L	1126 lm	8	UNV 120-
	1' - 1.375L	1377 lm	9	277V
	1' - 1.75L	1755 lm	1	347 347V
	2' - 2.5L	2353 lm		UN3 120-
	2' - 3.5L	3294 lm		347V
	2' - 4.5L	4271 lm		
	4' - 2.5L	2500 lm		
	4' - 3.5L	3500 lm		
	4' - 4.5L	4500 lm		
	4' - 5.5L	5500 lm		
	4' - 6.5L	6500 lm		
	4' - 7.5L	7250 lm		
	4' - 8.5L	8500 lm		

## Options

### Lenses

L18 Impact-Resistant Frosted Lens

### Cords

W3xx White 16/3 (Specify Length)  
W4xx Black 16/3 (Specify Length)  
W59xx White 16/5 (Specify Length)  
W\*\*\* Other Options Available

Key.	Cord Length.	Key	Cord Length
6	6FT	15	15FT
10	10FT	20	20FT

Ex. W406 would be 16/3 Black, 6FT

### Motion Sensors

W26 Photocell Motion Sensor  
W57 Dimming Motion Sensor (dims to 50% when unoccupied)  
W53\* On/Off  
W8\* High/Low  
WX16 Microwave Dimmable Sensor  
W\*\* Other Options Available

### Wire Guard

G1 Heavy Duty White  
G5 Heavy Duty Black

### Finish

BLANK Standard Gloss White  
C5 Matte Black  
CUSTOM\* Custom Colour Choice

### Dimming

B11 0-10V Dimming Leads  
B12 Line voltage dimming  
B27 Dim-to-off Driver

### Controls

WC10\* Encelium Wireless Controls  
WC18\* NX Wireless Controls  
WC19\* Avi-on Wireless Controls  
WC22\* JDRF Wireless Controls

### Emergency Driver

B17 UL924 6W Battery Back-up  
B24 UL924 10W Battery Back-up  
B38 UL924 16W Battery Backup  
F8 UL924 Emergency Relay

wattage	Activated Output
6W	990 lm
10W	1683 lm
16W	2666 lm

### Packaging

BLANK Individually Boxed on Pallets  
P0 Bulk Packaging  
P\*\* Other Options Available

### Mounting

M1 V-Hangers  
M2xx V-Hanger with Aircraft Loop Cables  
M3xx Y-Toggle Aircraft Cables  
M24 Single Pendant Mount(3/4 Hub)  
M\*\* Other Options Available

Key.	Aircraft Length.	Key	Aircraft Length
5	5FT	15	15FT
10	10FT	20	20FT

Ex. M305 would be Y-Toggle, 5FT

### Modular Wiring

W27XYZC Modular Power Cable  
W22XY Molex Row Mounting Wiring

### Warranty

CL7 10-Year Comprehensive Warranty Upgrade

# The Prescott Series

BLSP - Linear Strip


Linear Strip Lighting by




## Documentation and Resources

All files and resources are available on our website for download. Files and resources are also embedded as links in this document, listed below. Additional files may be available upon request.





Please contact your local sales agent [here](#) or [contactsales@bjtake.com](mailto:contactsales@bjtake.com) for more information.

 [BLSP - Installation Instructions](#)

 [BLSP - Photometry.zip](#)

## Certifications and Listings

Certifications that apply to this fixture and its possible configurations are listed here. More information available upon request.

Icon	Description
	Wireless Controls Available
	90 and 95+ CRI Options Available
	120-347V(UN3) Available
	ETL Listed
	DLC Listed

## Usage Applications

This fixture can be used in a variety of applications, and is ideal for the following:

Usage Application
Manufacturing Facilities
Storage
Offices
Schools
Retail Stores
Distribution Facilities
Processing Plants
Aisle Lighting

## Warranty Statement

BJ Take products are tested and/or inspected prior to being packaged for shipment and are guaranteed from the day the product is shipped for a period of ten-year LED chip warranty and a five-year comprehensive component warranty. This can be upgraded to a ten-year comprehensive warranty on request.

# The Prescott Series

BLSP - Linear Strip

Linear Strip Lighting by



## Wattage information

Below are the available wattage tables for the BLSP. More information is available upon request.

### BLSP 4' Wattage

Size	Lumen Output	Actual Lumen Output	Fixture Wattage	Lumens per watt
4'	2.5	2603	17.9	145.2
4'	3.5	3673	25.6	143.5
4'	4.5	4716	33.3	141.8
4'	5.5	5734	40.9	140.1
4'	6.5	6725	48.6	138.4
4'	7.5	7690	56.3	136.7
4'	8.5	8629	63.9	135.0
4'	9.5	9542	71.6	133.3
4'	10.5	10430	79.3	131.6
4'	11.5	11291	86.9	129.9

### BLSP 8' Wattage

Size	Lumen Output	Actual Lumen Output	Fixture Wattage	Lumens per watt
8'	5	5345	35.7	149.6
8'	7	7541	51.0	147.9
8'	9	9683	66.3	146.1
8'	11	11772	81.5	144.4
8'	13	13807	96.8	142.6
8'	15	15789	112.1	140.9
8'	17	17717	127.4	139.1
8'	19	19591	142.6	137.4
8'	21	21412	157.9	135.6
8'	23	23191	173.3	133.9

### BLSP Light Loss Factor (LLF)

CCT	Output%
2700K	92.95
3000K	95.51
3500K	96.80
4000K	100.00
5000K	101.28
90CRI	84.72

\* Actual lumen output may vary

# The Prescott Series

BLSP - Linear Strip

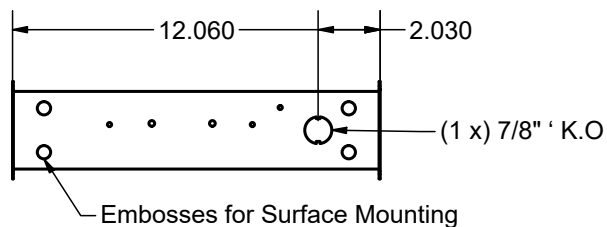
Linear Strip Lighting by



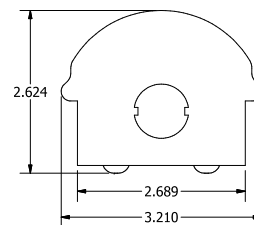
## Dimension Information

Below you will find the dimensions for all sizes of the BLSP.

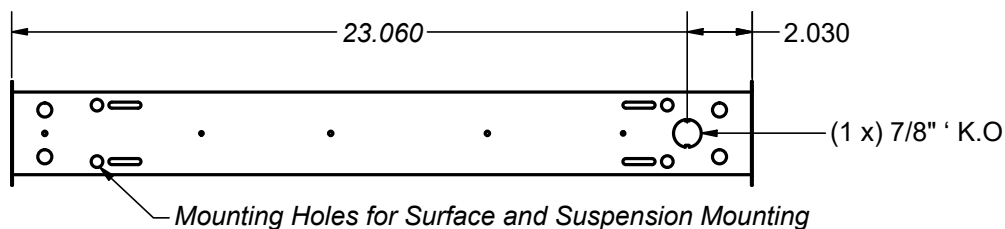
### BLSP 1' Side



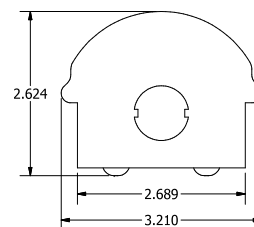
### End Dimensions



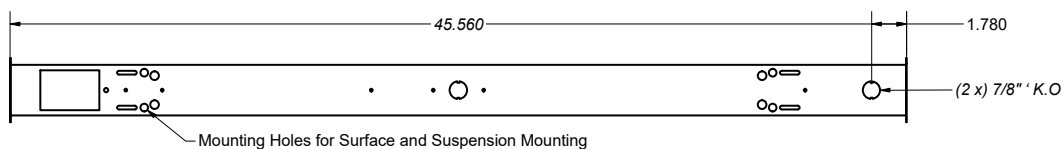
### BLSP 2' Side



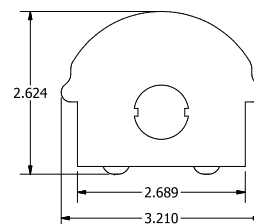
### End Dimensions



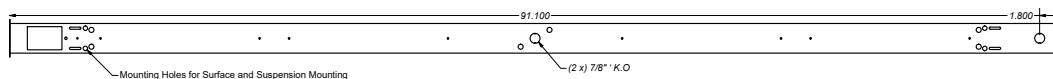
### BLSP 4' Side



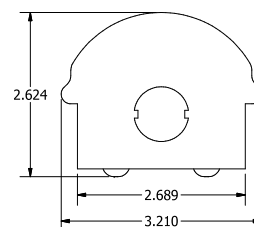
### End Dimensions



### BLSP 8' Side



### End Dimensions



\* Drawings aren't to scale

\* Standard tolerances apply

\* Specifications may change without notice

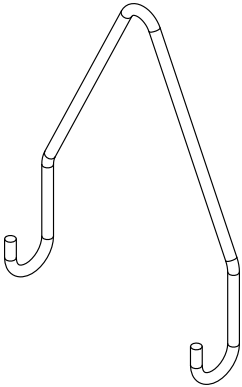
# The Prescott Series

BLSP - Linear Strip

Linear Strip Lighting by

**BJTAKE**  
LIGHTING

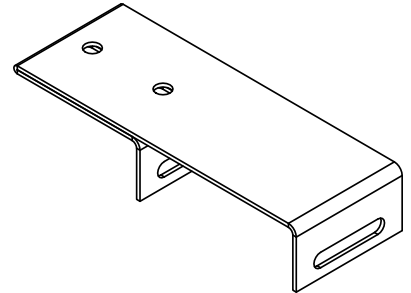
M1 - V-Hanger



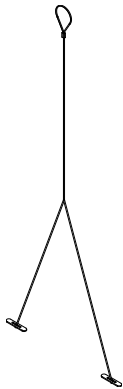
M2xx - V-Hanger + Aircraft Loop



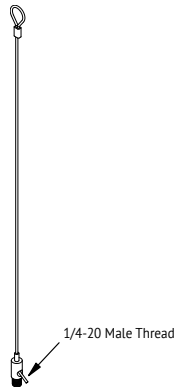
M64 - F-Style Bracket



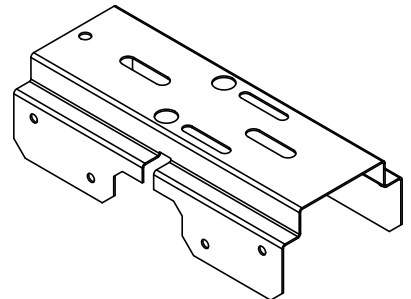
M3xx - Y-Toggle Aircraft Cables



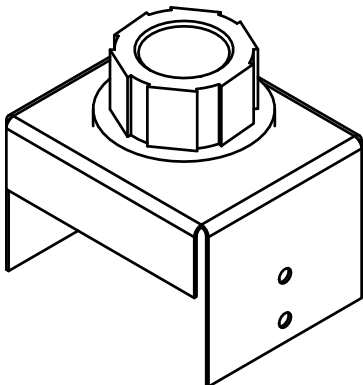
M62xx - Loop Kit + Side Grippers



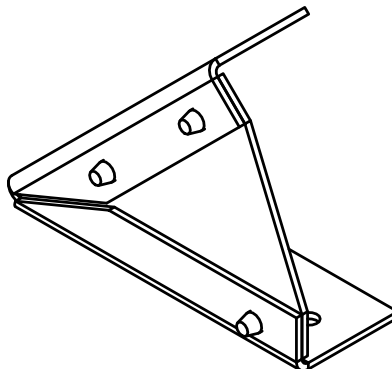
(Row) - Row Mount



M24 - 4 Foot Pendant Mount



M34 - 45° Bracket



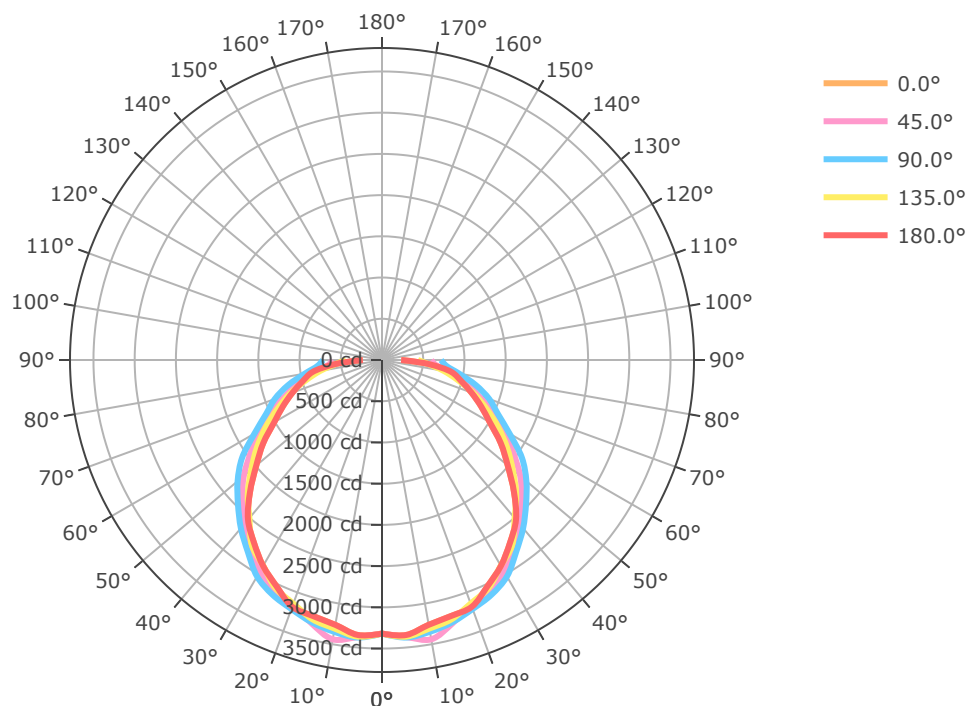
# The Prescott Series

BLSP - Linear Strip

Linear Strip Lighting by

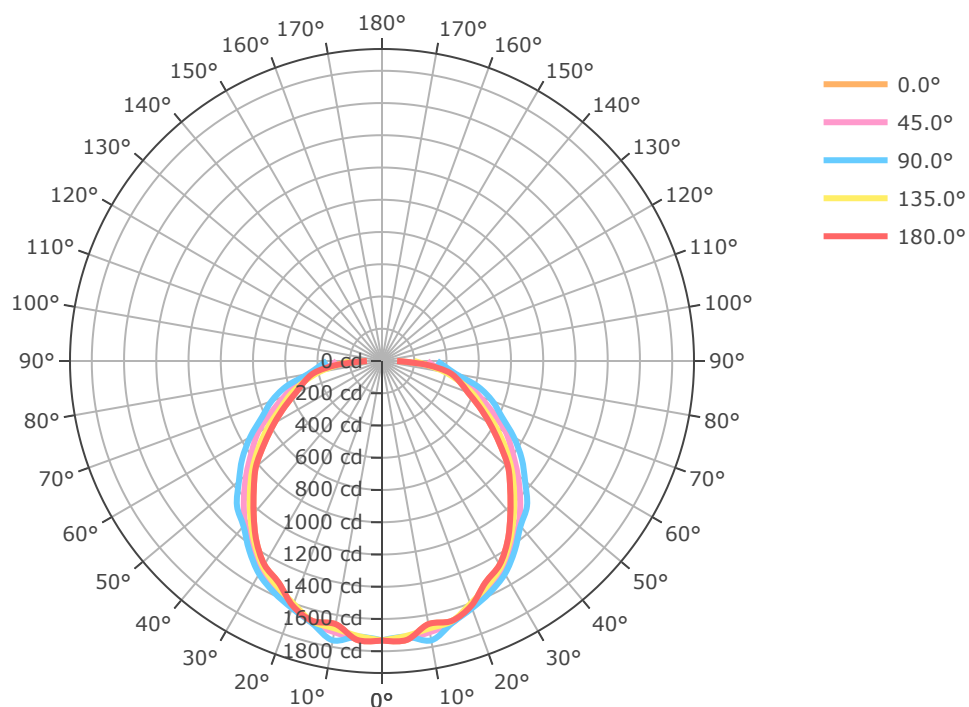


BLSP-4FT-11.5L-840-L18



Mtg Height	Light Level	Beam Diameter
6.0 ft	92.2 fc	18.5 ft
8.0 ft	51.9 fc	24.6 ft
10.0 ft	33.2 fc	30.8 ft
12.0 ft	23.0 fc	37.0 ft
14.0 ft	16.9 fc	43.1 ft
16.0 ft	13.0 fc	49.3 ft
24.0 ft	5.8 fc	73.9 ft
32.0 ft	3.2 fc	98.6 ft
40.0 ft	2.1 fc	123.2 ft
48.0 ft	1.4 fc	147.8 ft
56.0 ft	1.1 fc	172.5 ft
64.0 ft	0.8 fc	197.1 ft

BLSP-4FT-5.5L-840-L18



Mtg Height	Light Level	Beam Diameter
6.0 ft	48.1 fc	17.8 ft
8.0 ft	27.1 fc	23.7 ft
10.0 ft	17.3 fc	29.6 ft
12.0 ft	12.0 fc	35.6 ft
14.0 ft	8.8 fc	41.5 ft
16.0 ft	6.8 fc	47.4 ft
24.0 ft	3.0 fc	71.1 ft
32.0 ft	1.7 fc	94.9 ft
40.0 ft	1.1 fc	118.6 ft
48.0 ft	0.8 fc	142.3 ft
56.0 ft	0.6 fc	166.0 ft
64.0 ft	0.4 fc	189.7 ft



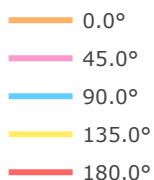
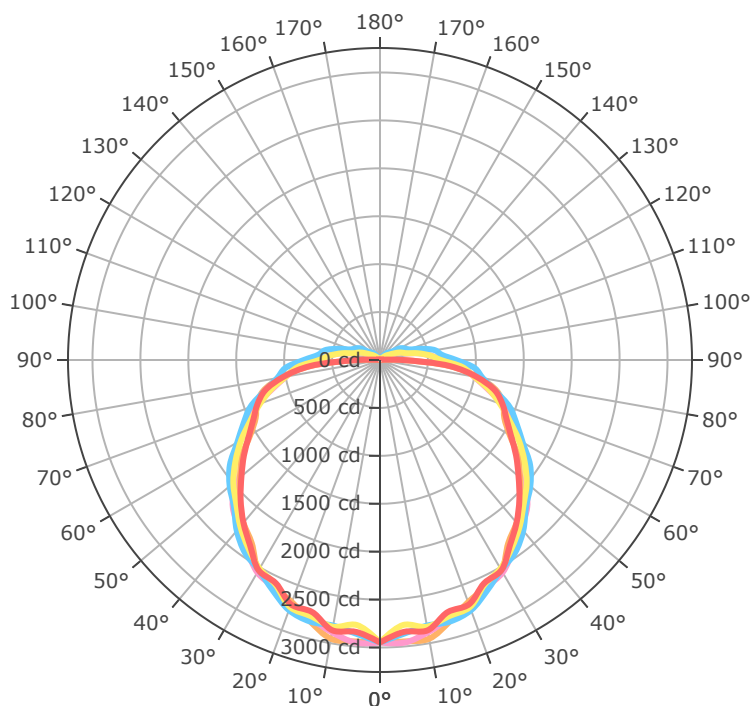
# The Prescott Series

BLSP - Linear Strip

Linear Strip Lighting by

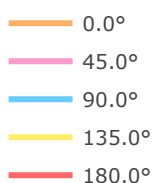
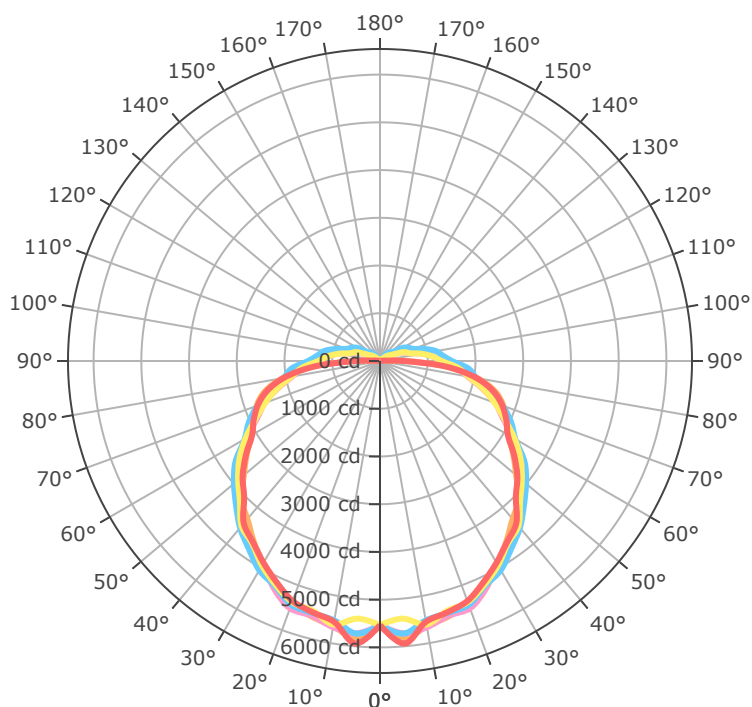


BLSP-8FT-11L-840-L18



Mtg Height	Light Level	Beam Diameter
6.0 ft	81.9 fc	23.9 ft
8.0 ft	46.1 fc	31.9 ft
10.0 ft	29.5 fc	39.9 ft
12.0 ft	20.5 fc	47.9 ft
14.0 ft	15.0 fc	55.9 ft
16.0 ft	11.5 fc	63.8 ft
24.0 ft	5.1 fc	95.8 ft
32.0 ft	2.9 fc	127.7 ft
40.0 ft	1.8 fc	159.6 ft
48.0 ft	1.3 fc	191.5 ft
56.0 ft	0.9 fc	223.5 ft
64.0 ft	0.7 fc	255.4 ft

BLSP-8FT-23L-840-L18



Mtg Height	Light Level	Beam Diameter
6.0 ft	153.7 fc	32.1 ft
8.0 ft	86.4 fc	42.8 ft
10.0 ft	55.3 fc	53.5 ft
12.0 ft	38.4 fc	64.1 ft
14.0 ft	28.2 fc	74.8 ft
16.0 ft	21.6 fc	85.5 ft
24.0 ft	9.6 fc	128.3 ft
32.0 ft	5.4 fc	171.0 ft
40.0 ft	3.5 fc	213.8 ft
48.0 ft	2.4 fc	256.6 ft
56.0 ft	1.8 fc	299.3 ft
64.0 ft	1.4 fc	342.1 ft



# The Prescott Series

BLSP - Linear Strip

Linear Strip Lighting by



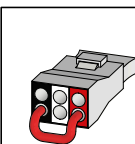
## Emergency Driver, Activated Output

wattage	Activated Output
6W	990 lm
10W	1683 lm
16W	2666 lm

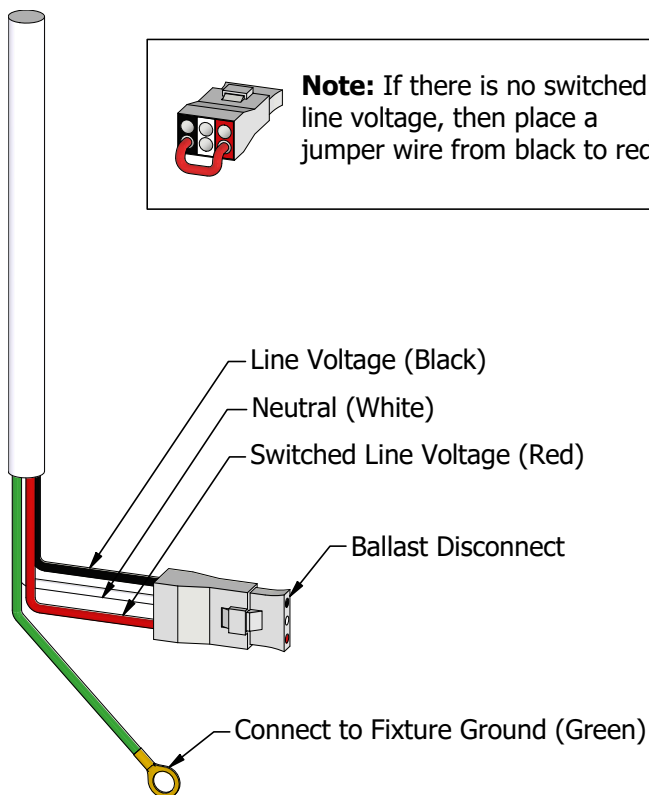
## Emergency Battery Plan - 10W

Emergency Lighting	Solution System Components	System Operation
Option Code 'B17' - UL 924 listed components that are factory installed in the luminaire	UL 924 listed 10-watt battery integral to the luminaire	Loss of normal power is detected by the B17 emergency light solution and the power supply is switched automatically to the 10-watt integral battery pack which powers the emergency LED lighting driver.
	UL 924 listed LED emergency lighting driver integral to the luminaire	The battery pack and emergency LED driver are UL 924 certified to provide a minimum of 90-minutes of emergency lighting.
	Wiring options for both switched and unswitched emergency lighting	

## Emergency Lighting Wiring



**Note:** If there is no switched line voltage, then place a jumper wire from black to red.



## Important Information

More information on emergency lighting options and configurations available on request.

## Gallery Information

Below you will find images of relevant products and configurations for the BLSP.

